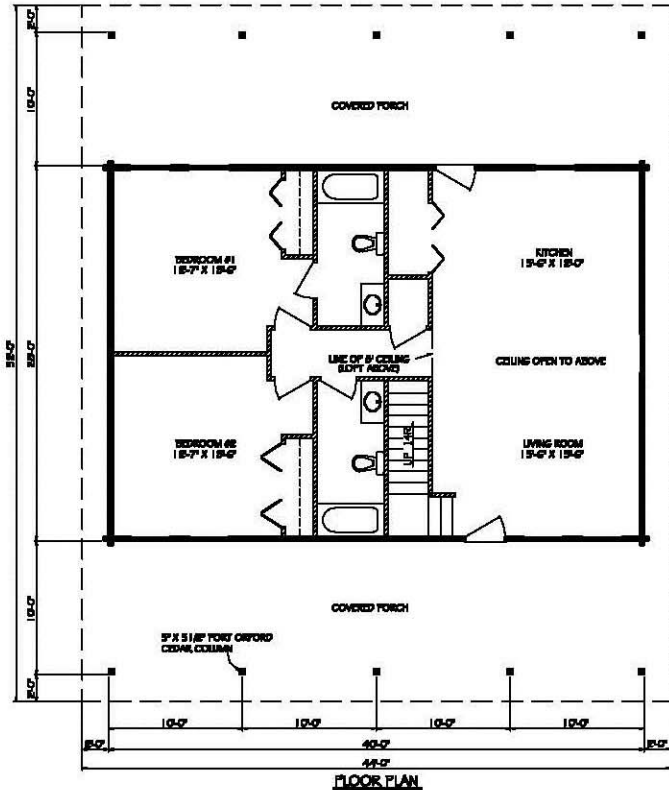




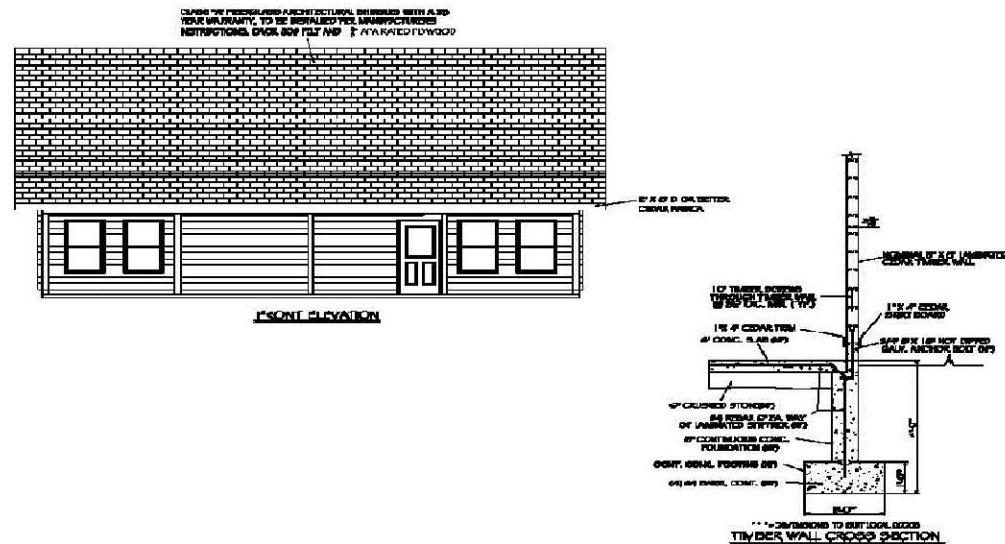
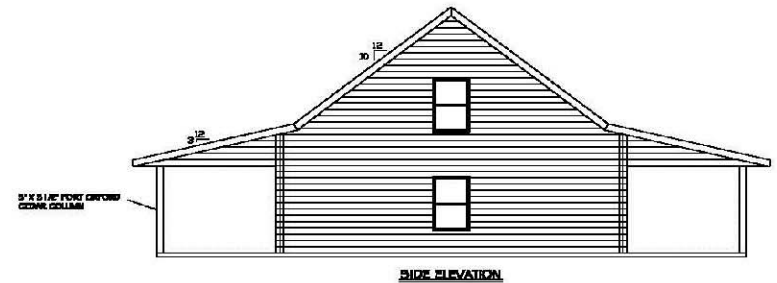
Cedar Forest Products
800.552.9495
www.cedarforestproducts.com

Montana

(1,120 sq. ft. enclosed)



- 5" X 8" NOMINAL CEDAR TIMBER EXTERIOR WALLS
- SLAB ON GRADE CONSTRUCTION
- STEEL EXTERIOR DOORS
- ALUMINUM CLAD VETER WINDOWS
- 2" X 4" INTERIOR WALL CONSTRUCTION
- SOLID CORE 6 PANEL PINE INTERIOR DOORS
- TRUSSES ROOF SYSTEM (INSULATION OPTIONAL)
- CEDAR FASCIA AND SOFFIT
- 35 YEAR ARCHITECTURAL SHINGLES



** DIMENSIONS TO EXTERIOR DOORS
TIMBER WALL CROSS SECTION