



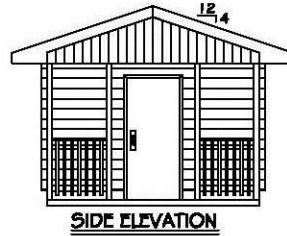
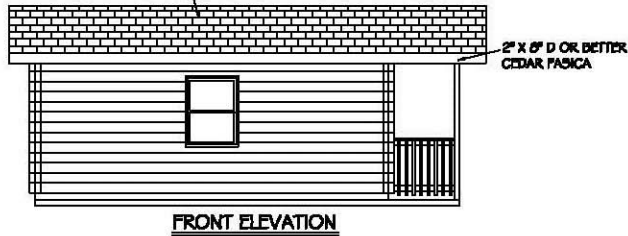
Cedar Forest Products  
 800.552.9495  
 www.cedarforestproducts.com

# Huntington

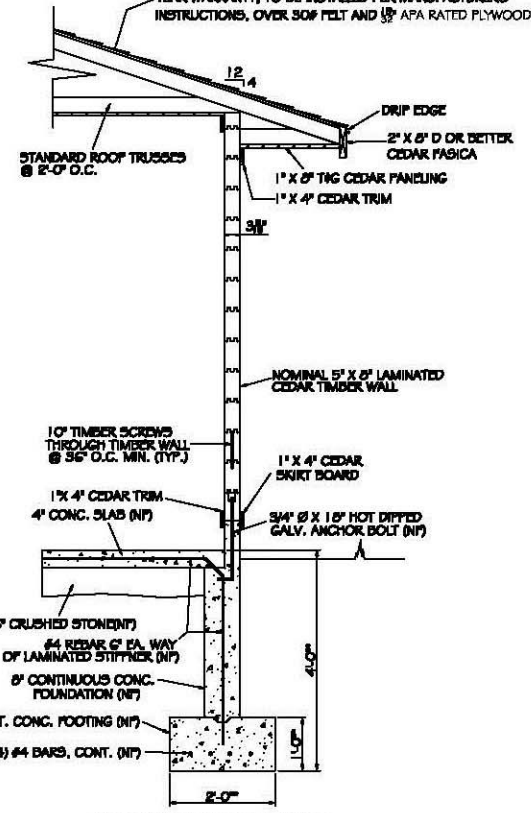
(240 sq. ft. enclosed)



CLASS 'A' FIBERGLASS ARCHITECTURAL SHINGLES WITH A 35 YEAR WARRANTY, TO BE INSTALLED PER MANUFACTURERS INSTRUCTIONS, OVER 30# FELT AND 5/8" APA RATED PLYWOOD



CLASS 'A' FIBERGLASS ARCHITECTURAL SHINGLES WITH A 35 YEAR WARRANTY, TO BE INSTALLED PER MANUFACTURERS INSTRUCTIONS, OVER 30# FELT AND 5/8" APA RATED PLYWOOD



- 5" X 8" NOMINAL CEDAR TIMBER EXTERIOR WALLS
- SLAB ON GRADE CONSTRUCTION
- STEEL EXTERIOR DOORS
- ALUMINUM CLAD VETTER WINDOWS
- 2" X 4" INTERIOR WALL CONSTRUCTION
- SOLID CORE 6 PANEL PINE INTERIOR DOORS
- TRUSSES ROOF SYSTEM (INSULATION OPTIONAL)
- CEDAR FASCIA AND SOFFIT
- 35 YEAR ARCHITECTURAL SHINGLES

\*\*\* - DIMENSIONS TO SUIT LOCAL CODES  
**TIMBER WALL CROSS SECTION**

